

INTERIOR DESIGN®

bestof
hospitality
ARCHITECTURE & DESIGN





***Clockwise from opposite:** The custom light fixture in reception derives from the building's curved facade; the glass-enclosed treatment room at left is screened with automated sheers. Translucent ceiling panels from Kalwall coax light into the waiting room. Vitrines built into the staircase display Obagi products. Panels of CNC-cut silver travertine define walls inside and out. ➤*

Aria Design

**OBAGI SKIN HEALTH INSTITUTE
LAGUNA BEACH, CALIFORNIA**

Skincare guru Dr. Zein Obagi wanted the design of his new headquarters—perched cliffside on the Pacific Coast Highway—to serve as a provocative metaphor for the cutting-edge treatments taking place within. To that end, Horst Noppenberger of Horst Architects conceived a mesmerizing ribbonlike facade of silver travertine that undulates like a cresting wave. The fluid stone walls wend inside as well, creating a stunning canvas for Aria Design's equally dynamic interior scheme.

To take advantage of the ample natural light that spills in through abundant exterior glazing, Aria Design's Arianna Noppenberger enclosed treatment rooms in glass walls. When rooms are occupied, sheer white curtains can be unfurled at the touch of a button. In addition to preserving airiness, the use of glass versus drywall helped maximize the limited square footage. Another savvy space-saver is floor-to-ceiling cabinetry that doubles as room dividers. Even the staircase is multipurpose, fitted with storage drawers and LED-lit display vitrines.

Ivory solid-surfacing and hydrangea-blue upholstery complement the building's cool, composed materiality. So do organic, freeflowing shapes—from light fixtures to cushy seating. "We used minimalist touches to balance the strong architectural presence," says Noppenberger. In other words, everything works in harmony.

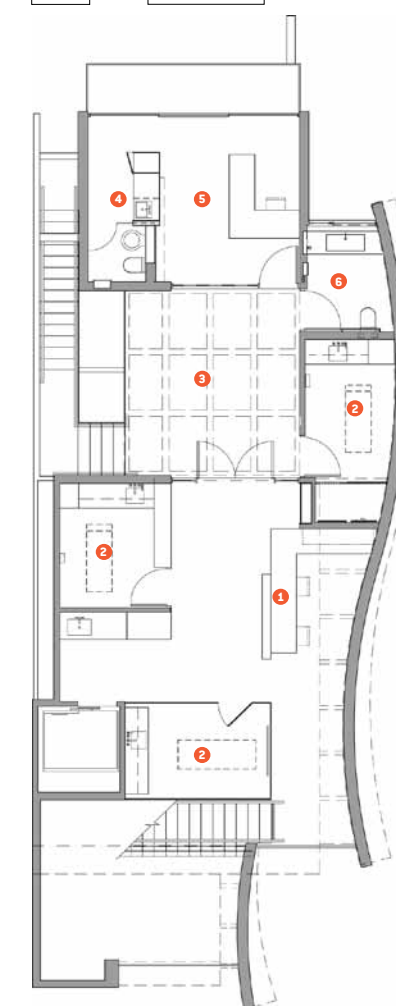
ARIA DESIGN ARIANNA NOPPENBERGER, ASID; KENDALL HARRIS; PRALUCK WATSON
HORST ARCHITECTS HORST NOPPENBERGER, AIA; YANI WONG
CONTRACTOR PRESTIGE BUILDERS
PHOTOGRAPHY TOBY PONNAY
www.ariades.com
www.horst-architects.com





- 1 RECEPTION
- 2 TREATMENT ROOM
- 3 ATRIUM
- 4 KITCHENETTE
- 5 OFFICE
- 6 RESTROOM

0 5 10 20



2,500 SF
\$1.5 MILLION

***Clockwise from top:** Exposed structural steel straddles the skylight above reception. Though the travertine is treated in a modern manner, the material itself is a classic, once a staple of Roman public baths. Flooring throughout is creamy porcelain. Wall planks are a sustainable and maintenance-free composite of wood fibers and thermosetting resins.*



Reprinted with permission from *Interior Design's
Best of Hospitality Architecture & Design Volume II.*

Copyright 2014. Published by
Sandow, Boca Raton, Florida.

